

BOK PARK PLAZA

499 W. Sheridan Avenue, Oklahoma City, OK 73102



PROJECT DATA

Total Rentable Area
663,294 SF

Total Building Height
433'9"

Total Number of Floors
27

Typical Floor Rentable Area
25,500 SF

Typical Floor-to-Floor Height
14'0"

Typical Floor-to-Ceiling Height
10'0"

Typical Floor Lease Depth
42'6"

Total Parking
2,110 Cars

West Garage
1,469 Cars

North Garage
641 Cars

BUILDING AMENITIES

Floor-to-ceiling glass at office levels
Efficient, column-free floor plate
Connectivity to OKC skybridge/tunnel network
Firmness center
Ground level and second level retail
Proximity to Central Business District, Myriad Gardens, Convention Center and Devon Energy Center
Strategic location along the OKC core-shore growth corridor

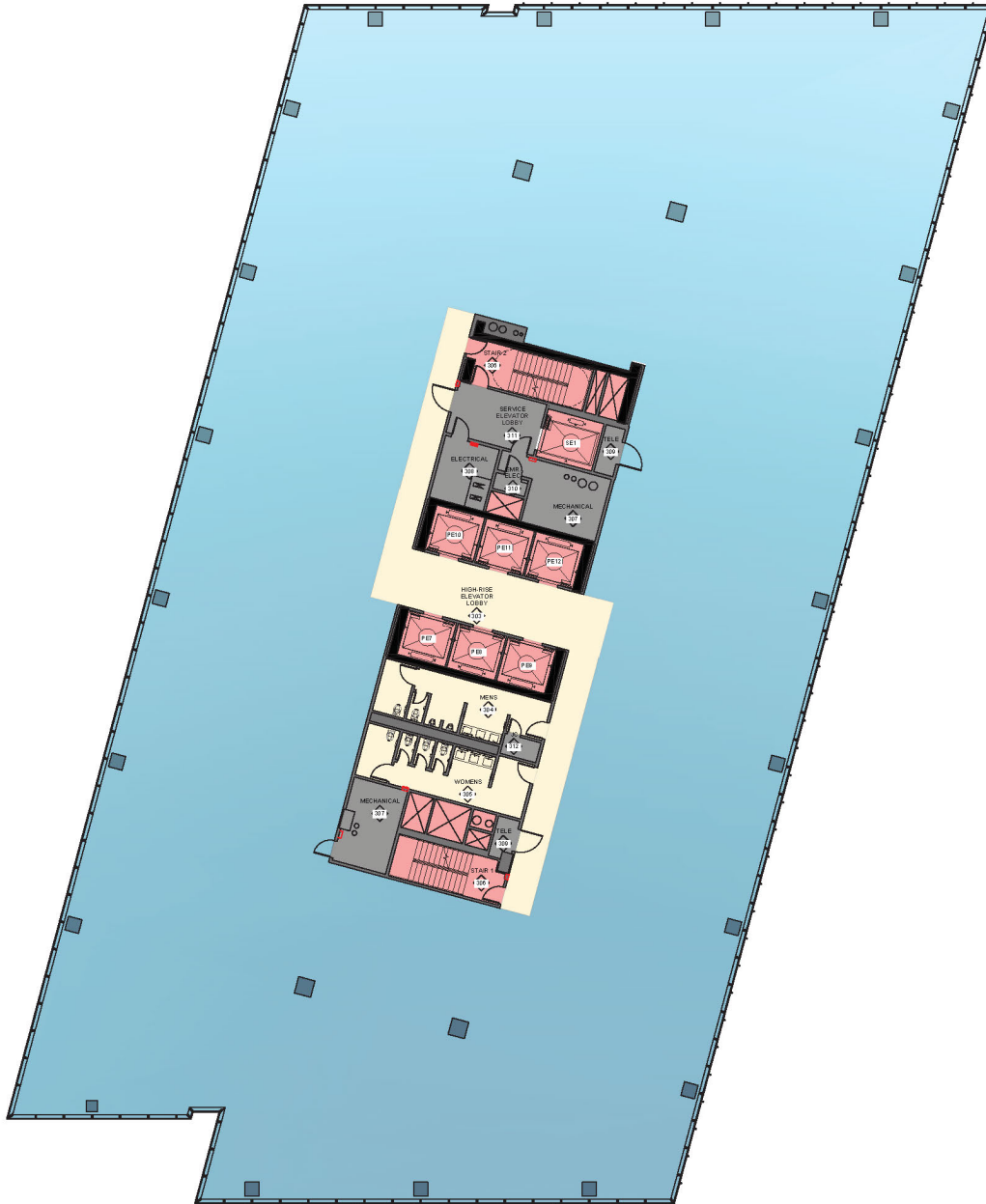
PRICE EDWARDS AND CO.

Office Leasing Contact
Craig Tucker
405.239.1202
ctucker@priceedwards.com



The information above has been obtained from sources believe reliable. While we do not doubt its accuracy, we have not verified it and make no guarantee, warranty, or representation about it. You and your legal and technical advisors should conduct a careful, independent investigation of the property to determine to your satisfaction to the suitability of the property for your needs.

21st Floor 25,907 RSF



NORTH ARROW