

# BOK PARK PLAZA

499 W. Sheridan Avenue, Oklahoma City, OK 73102



## PROJECT DATA

Total Rentable Area  
663,294 SF

Total Building Height  
433'9"

Total Number of Floors  
27

Typical Floor Rentable Area  
25,500 SF

Typical Floor-to-Floor Height  
14'0"

Typical Floor-to-Ceiling Height  
10'0"

Typical Floor Lease Depth  
42'6"

Total Parking  
2,110 Cars

West Garage  
1,469 Cars

North Garage  
641 Cars

## BUILDING AMENITIES

- Floor-to-ceiling glass at office levels
- Efficient, column-free floor plate
- Connectivity to OKC skybridge/tunnel network
- Fitness center
- Ground level and second level retail
- Proximity to Central Business District, Myriad Gardens, Convention Center and Devon Energy Center
- Strategic location along the OKC core-shore growth corridor

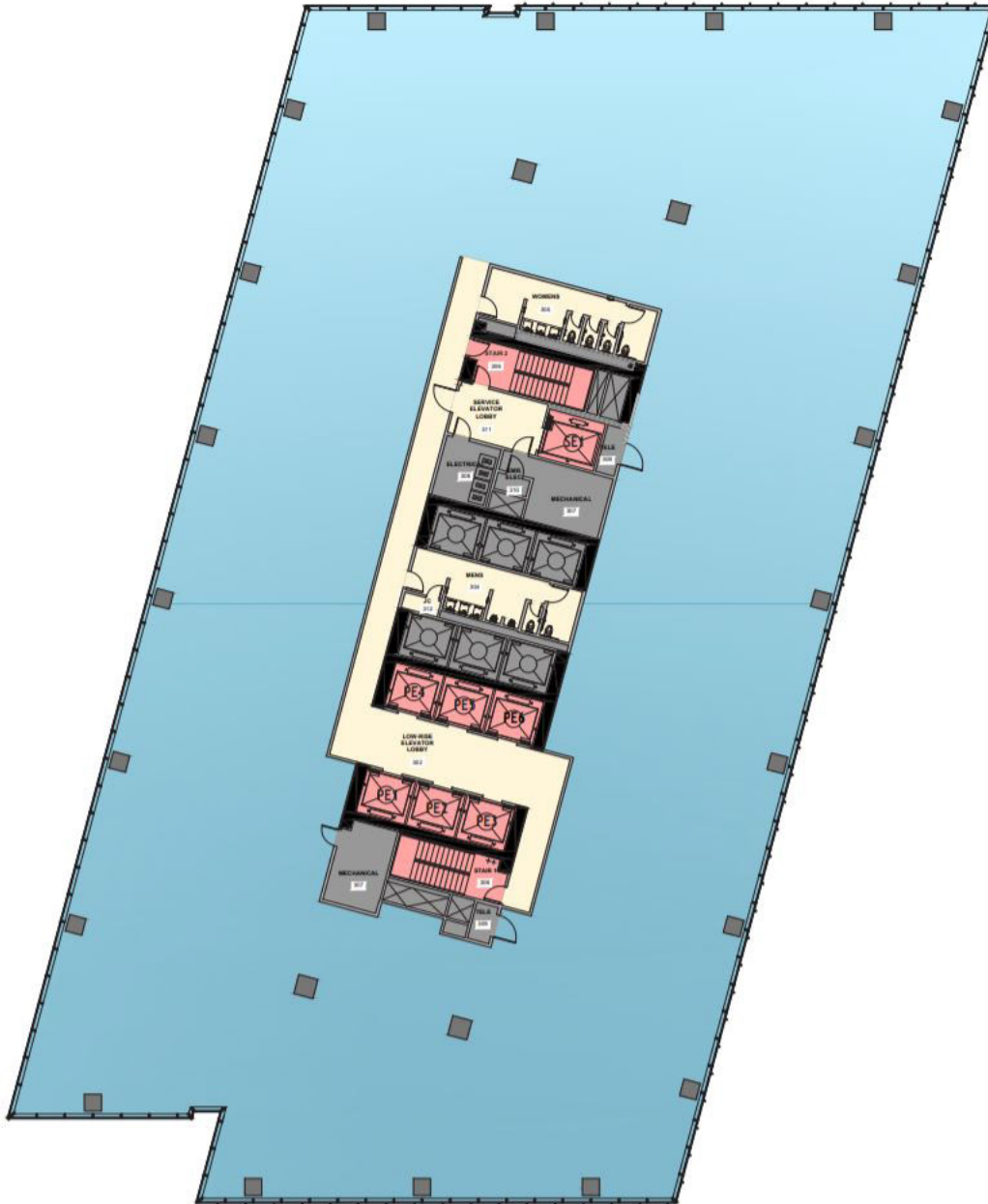
PRICE EDWARDS AND CO.

Office Leasing Contact  
Craig Tucker  
405.239.1202  
[ctucker@priceedwards.com](mailto:ctucker@priceedwards.com)



The information above has been obtained from sources believe reliable. While we do not doubt its accuracy, we have not verified it and make no guarantee, warranty, or representation about it. You and your legal and technical advisors should conduct a careful, independent investigation of the property to determine to your satisfaction to the suitability of the property for your needs.

**23rd Floor**  
**25,907 RSF**



NORTH ARROW