

HAFER PLAZA

1008 S. BRYANT, EDMOND, OK 73034



PROPERTY DESCRIPTION

- Excellent building signage fronting Bryant
- Work out facility with shower
- Onsite ownership
- Common break area
- Upscale restrooms
- Full service lease includes normal utilities, maintenance and janitorial
- Internet service included for an additional \$25 / month

LOCATION DESCRIPTION

This beautiful Class A office building is situated in the heart of east Edmond on Bryant south of 9th Street. The building is adjacent to Hafer Park Trails and the Pelican Bay Aquatic Center. Convenient to numerous restaurants and shopping.

OFFERING SUMMARY

Suite 200:

±3,243 RSF
\$5,675 / month
with 3% annual increases

TOM FIELDS

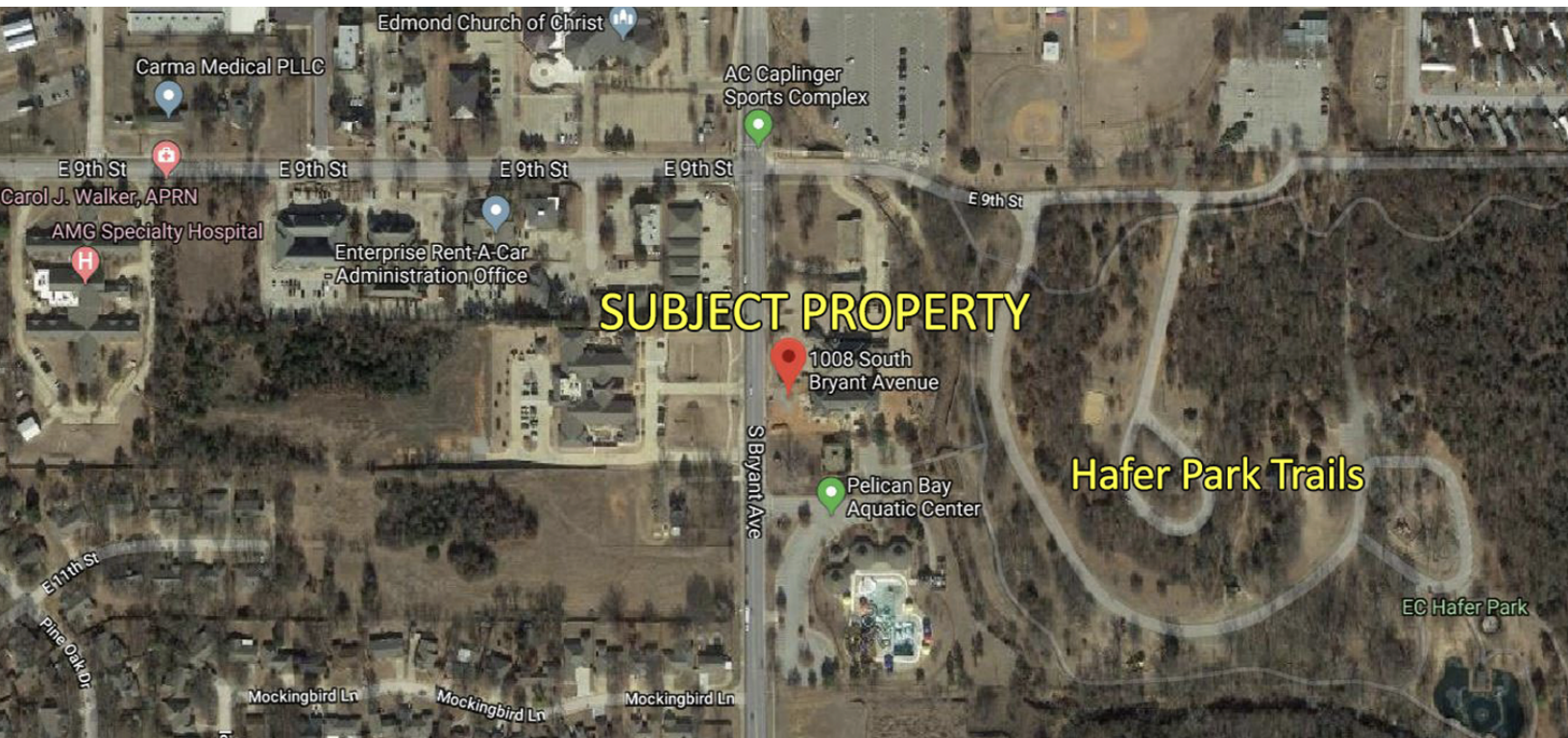
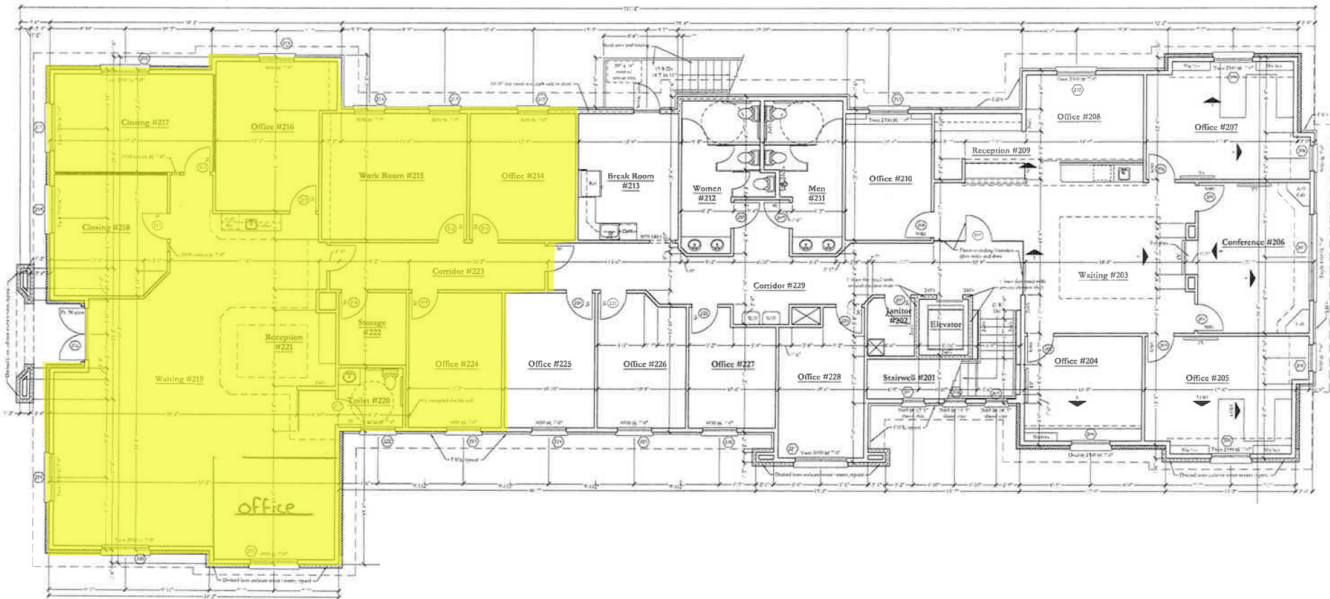
tfields@priceedwards.com

O: 405.239.1205

HAFER PLAZA

1008 S. BRYANT, EDMOND, OK 73034

Suite 200
±3,243 RSF
\$5,675 / month



TOM FIELDS

tfields@priceedwards.com

O: 405.239.1205